

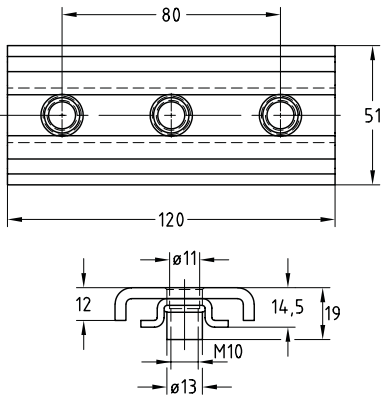
MPR-Sliding shoes
galvanised

Application

- Attachment of pipes with thermal, axial expansion
- Suitable for pipes mounted from above and from below
- For use in dry interiors
- Ideal for fastening plastic pipes with long sliding distances

Your advantages

- Length of sliding distance can be freely determined by suitable selection of support channel length
- In connection with the MPR-Support channel 41/21 very low installation height of only 25 mm
- For use with all MPR-Support channels from 41/21 to 41/124
- Heavy-duty all-metal design



Features

Material thickness of support channel [mm]	Max. recommended load [N]
1.5	1,600
2.0	4,200
2.5	5,400

Connecting thread M10	For profiles 41/21-41/124	Part no. 176154	Sales unit 25	Pack unit Pieces
--------------------------	------------------------------	--------------------	------------------	---------------------