

Floor plates quick fastener

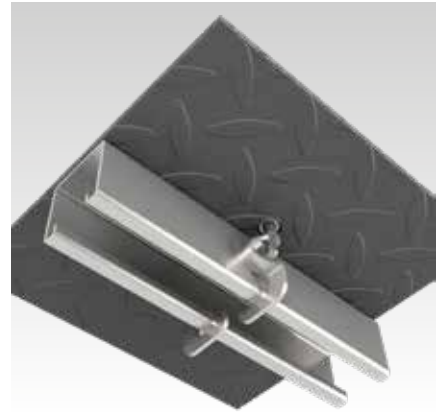
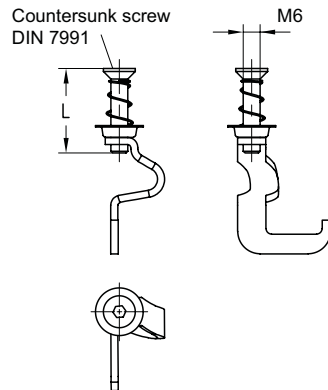
galvanised

Application


- Fastening of floor plates to floors in technical rooms of ships

Your advantages

- Fast and rational fastening of floor plates without tapping or drilling in the channel profile
- Prefabrication of the mounting holes in the floor plates is possible while maintaining the required edge distances
- Easy disassembly of the floor plates for maintenance work and subsequent reuse of the quick fastener
- Can be used for floor plates with a thickness of up to 6 mm
- Clean optics, the countersunk screw and its mount sit flush with the surface
- Compatible with MPR-Support channels 41/41/2.5 and MPR-Support channels 41/41 with coaming edge



For profiles	Connecting thread	Length L [mm]	Part no.	Sales unit	Pack unit
41/41/2.5	M6	25	177002	100	Pieces

 Please note a tightening torque of 0.7 Nm.