

MPT-Angle connectors 90°

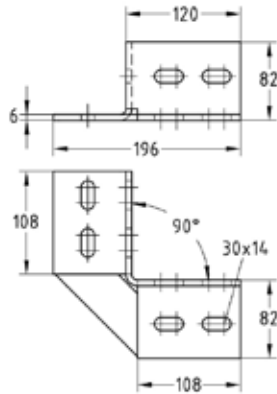
hot-dip galvanised

Application

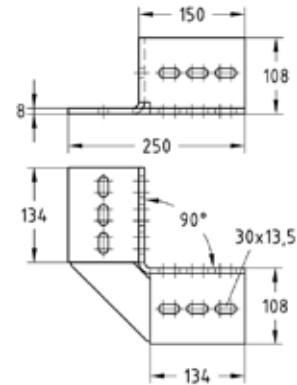
- Connecting element for shelves and rail constructions in shipbuilding, industrial construction and plant engineering

Your advantages

- Fast and simple installation of 90° angled joints
- Quick attachment using MPT-Hammer head fasteners for secure transmission of high forces
- Time and cost savings thanks to easy handling and assembly on the construction site



For profile Q80



For profile Q100

For profiles	Weight [kg]	Part no.	Sales unit	Pack unit
Q80-2.0	1.49	176805	1	Pieces
Q100-2.5, Q100-3.5	3.564	176742		