

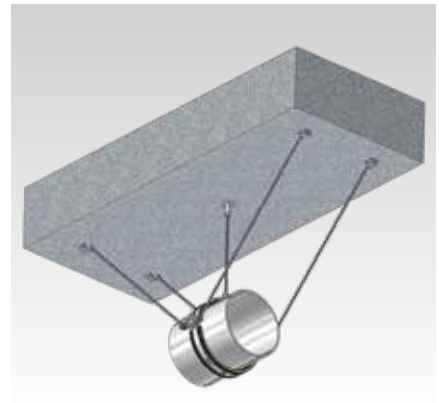
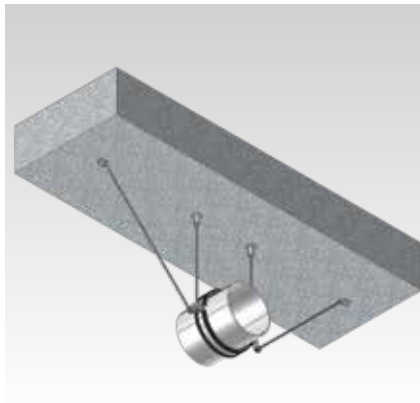
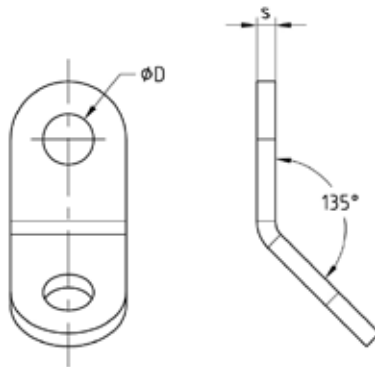
## Bracing angles galvanised

### Application

- For brace assembly in combination with pipe clamps
- For the seismic bracing of pipe supports using threaded rods
- For use in dry interiors

### Your advantages

- For brace assembly in new and retrofit constructions
- Easy installation: after closing the pipe clamp, the bracing angles are mounted on the protruding threads of the locking screws in the pipe clamp flange and fixed by a locknut
- High load-bearing capacity and optimum transmission of longitudinal and shear forces
- Can be combined with single bossed clamps and single bossed clamps heavy-duty version
- Only slightly tightened, bracing angle can still be rotated



### Features

Max. recommended tensile load $F_z$ [N]	3,000
$\alpha = 45^\circ \pm 15^\circ$	

Size	Dimensions [mm]		Part no.	Sales unit	Pack unit
	D	s			
M8	9	3	177942	50	Pieces
M10	11	4	177943		

**⚠** When using single bossed clamps heavy-duty version, M8 x 45 (part no. 105789) or M10 x 55 (part no. 105600) screw plugs are recommended (can be ordered separately).

In all cases, a lock nut M8 (part no. 105531) or M10 (part no. 105511) should be used.

Note the tightening torque of the lock nut: max. 5 Nm.

Not a substitute for a fixed point, but can only be used for bracing.