

### DÄMMGULAST® Channel sections

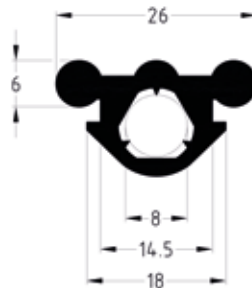
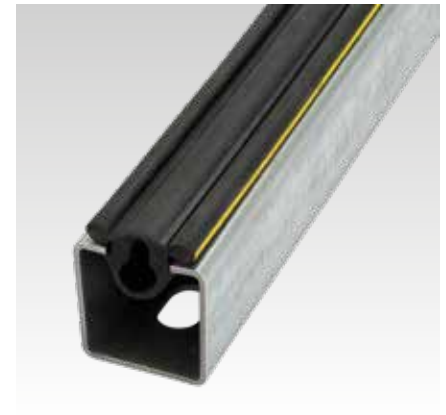
for MPC-Profiles

#### Application

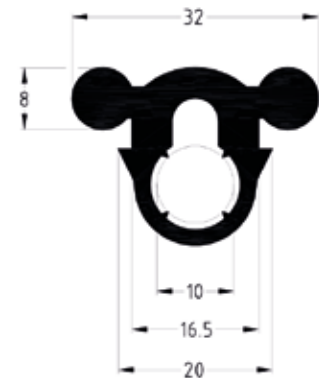
- Ideal for the decoupling of traverses for air duct fixtures
- For secure vibration-decoupling of MPC-Support channels

#### Your advantages

- Easy installation by inserting into MPR-Support channels and/or screwing onto threaded rods
- Prevents structure-borne noise coupling by avoiding contact between the air duct and the threaded rods
- Interlocking profile prevents channel section being pushed out
- Prevents fluttering and other vibration noises in the air ducts
- Small contact surface, large absorption mass



For profiles 27/18 and 28/30



For profiles 38/24 to 40/120

#### Features



Design	For profiles	Suitable for	Part no.	Sales unit	Pack unit
DÄMMGULAST® Channel sections roll of 30 m	27/18, 28/30	Channels with slot widths of 13-16 mm, M8 threaded rods	<b>107689</b>	1	Roll
	38/24-40/120	Channels with slot widths of 15-18 mm, M8 and M10 threaded rods	<b>107690</b> <b>107691</b>	300	Pieces
DÄMMGULAST® Channel sections section of 50 mm			<b>107686</b>	200	
DÄMMGULAST® Channel sections section of 100 mm					



When installing air conditioning and ventilation equipment, MPC-Support channels can be used as load-bearing traverses. Structure-borne vibration coupling bridges resulting from direct metal contact between the air duct and the traverse or threaded rods can be prevented by the use of DÄMMGULAST® Channel section as intermediate layer.

The DÄMMGULAST® Channel section was developed especially for these application areas and provides the optimum solution from a practical installation point of view.