

### Insulation clamps RG 80

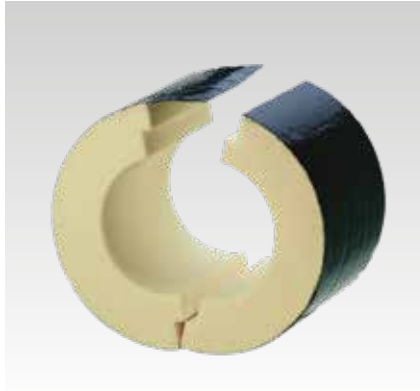
with DÄMMGULAST® and insulation shells, galvanised

#### Application

- Thermal decoupled pipe attachment in the field of refrigeration
- Specially suitable for attachments in ventilation, air-conditioning, heating, refrigeration installations as well as for hot and chilled water pipes

#### Your advantages

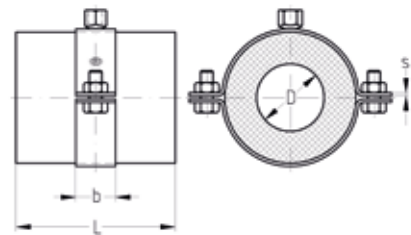
- Rigorous avoidance of temperature bridges in hot or cold pipework
- High insulation effect, low effective density
- Prevents the formation of condensation on the pipe clamp
- Vapour barrier due to the aluminium facing
- Good adhesion between shell and vibration lining due to releasing agent-free surfaces
- Longer shell lengths are available if the vapour barrier is required to overlap within the region of the butt joints
- Load-distributing sleeves are available for improved spreading of the load
- Insulation shells and pipe clamps with DÄMMGULAST® lining are matched to fit exactly
- Average vibration reduction up to 22 dB(A)



#### Features



|                           |  |
|---------------------------|--|
| Material                  | Polyurethane rigid foam, with closed cells   |
| Fire classification       | B2 acc. to DIN 4102 (normally flammable)   |
| Effective density [kg/m³] | 80   |
| Thermal conductivity      | $\lambda = 0.026 \text{ W/mK}$   |
| Temperature range         | -30 °C to +120 °C  |
| Compression strength      | 0.65 N/mm²   |
| Design                    | PU shell, aluminium facing, black surface finish, vibration damping due to single bossed clamp with DÄMMGULAST® lining |




### Insulation clamps RG 80

with DÄMMGULAST® and insulation shells, galvanised

| Pipe outer Ø D |       | Connecting thread<br>M | Insulation thickness<br>[mm] | Shell length<br>L<br>[mm] | Part no. | Sales unit | Pack unit |
|----------------|-------|------------------------|------------------------------|---------------------------|----------|------------|-----------|
| [inch]         | [mm]  |                        |                              |                           |          |            |           |
| ½"             | 21.3  | M10                    | 20                           | 100                       | 124436   | 1          | Pieces    |
| ¾"             | 26.9  |                        |                              |                           | 124502   |            |           |
| 1"             | 33.7  |                        |                              |                           | 124546   |            |           |
| 1¼"            | 42.4  |                        |                              |                           | 124582   |            |           |
| 1½"            | 48.3  |                        |                              |                           | 110242   |            |           |
|                | 57    |                        |                              |                           | 110256   |            |           |
| 2"             | 60.3  |                        |                              |                           | 110266   |            |           |
|                | 70    |                        |                              |                           | 110286   |            |           |
| 2½"            | 76.1  |                        |                              |                           | 110300   |            |           |
|                | 83    |                        |                              |                           | 110310   |            |           |
| 3"             | 88.9  |                        |                              |                           | 110320   |            |           |
|                | 110   |                        |                              |                           | 124212   |            |           |
| 4"             | 114.3 |                        |                              |                           | 124245   |            |           |
|                | 125   |                        |                              |                           | 124269   |            |           |
|                | 133   |                        |                              |                           | 124289   |            |           |
| 5"             | 139.7 |                        |                              |                           | 124329   |            |           |
|                | 160   |                        |                              |                           | 124358   |            |           |
| 6"             | 168.3 |                        |                              |                           | 124381   |            |           |
| 8"             | 219.1 |                        |                              |                           | 124464   |            |           |



 According to the AGI Working Sheet Q 11 ("Arbeitsgemeinschaft Industriebau", an association for industrial construction works) the insulating shell must have the same thickness as that of the vibration lining. The butt joints between the insulation shell halves and the outer vibration lining must overlap and be functionally linked to each other. This can be done e.g. by the use of adhesive or self-adhesive tape.

To achieve as good a vapour-tight joint as possible, an adhesive tape overlap of 50 mm on each side of the butt joints is occasionally required. For this purpose, the insulation shells can be supplied in longer lengths. The length of the insulation shells in all cases should be agreed in detail by the pipe-laying contractor on the one hand and the insulation contractor on the other prior to starting the installation work.

**For pipe diameters of 2" and upwards we recommend as a principle the insertion of load-distributing sleeves for spreading the load.**

The use of load-distributing metal sleeves can also be required for smaller pipe diameters depending on the spacing between supports.

When installing pipe anchor points we recommend wooden blocks and STATO® Clamps.

Differing diameters, connection threads, insulation thicknesses and shell lengths can be produced upon request.