

Insulation clamps type 175 EX

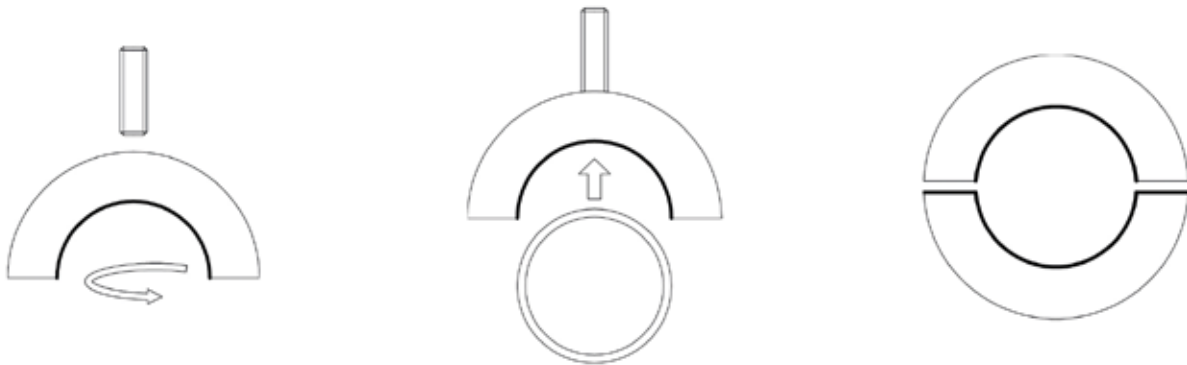
galvanised

Application

- Thermal decoupled pipe attachment in the field of refrigeration
- Specially suitable for attachments in ventilation, air-conditioning, heating, refrigeration installations as well as for hot and chilled water pipes
- Stable insulating element for high impacts

Your advantages

- Two half shells including screws, mounted
- With combined connecting thread metric and inch
- High vapour diffusion resistance
- Ideal for separating individual pipe sections when using open diffusion insulating materials (mineral fibre)
- With caoutchouc lining on the pipe side and on the separation surfaces of the insulating clamp, no PU-Sealer necessary



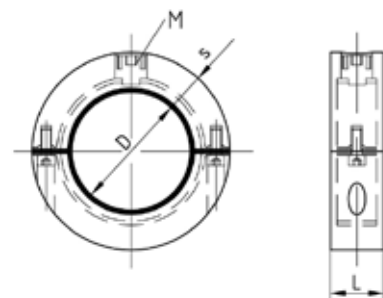
Screw on upper half with dual thread

Position pipe

Firmly screw lower half with the offset caoutchouc seating (PUR on caoutchouc, caoutchouc on PUR) firmly to the upper half. The additional use of PU sealer may be omitted

Features


Material	Polyurethane, black
Fire classification	B2 acc. to DIN 4102 (normally flammable)
Effective density [kg/m³]	250
Thermal conductivity	$\lambda = 0.029 \text{ W/mK}$ at -180 °C , $\lambda = 0.032 \text{ W/mK}$ at -150 °C , $\lambda = 0.038 \text{ W/mK}$ at -100 °C , $\lambda = 0.044 \text{ W/mK}$ at -50 °C , $\lambda = 0.047 \text{ W/mK}$ at -20 °C , $\lambda = 0.049 \text{ W/mK}$ at 0 °C , $\lambda = 0.052 \text{ W/mK}$ at $+20 \text{ °C}$, $\lambda = 0.054 \text{ W/mK}$ at $+40 \text{ °C}$
Temperature range	-50 °C to $+105 \text{ °C}$
Water vapour diffusion resistance	$\mu = 1,200$
Compression strength	8.11 N/mm^2 at -180 °C , 9.62 N/mm^2 at -80 °C , 4.91 N/mm^2 at 0 °C , 3.96 N/mm^2 at $+23 \text{ °C}$



Insulation clamps type 175 EX galvanised

Pipe outer Ø D [mm]	Connecting thread M	Insulation thickness [mm]	Shell length L [mm]	Locking Screws	Permanent load- bearing capacity [N]	Part no.	Sales unit	Pack unit					
9.5	M8/M10/½"	30	40	5	250	111360	1	Pieces					
12.7						111304							
15.8						111312							
17.2						111318							
18						111320							
21.3						111326							
22						111330							
26.9						111332							
28						111334							
33.7						111336							
35						111338							
42.4						111340							
48.3						111342							
50						111344							
54						111346							
60.3						M10/½"			40	50	6	1,200	111350
64												1,240	111352
70												1,370	111354
76.1												1,480	111356
88.9												1,730	111358
108	2,530	111299											
114.3	2,670	111302											
129	3,010	111306											
133	3,110	111308											
139.7	3,270	111310											
159	M12/½"	40	60	8	3,720	111314							
168.3					4,040	111316							
193.7					4,300	111322							
204					5,200	111324							
219.1	M16/¾"	60	100		5,260	111328							



 According to the AGI Working Sheet Q 11 ("Arbeitsgemeinschaft Industriebau", an association for industrial construction works) the insulation of refrigeration lines must be made diffusion tight. The connection with the outer pipe insulation is made by using a complying adhesive for the insulation material (use adhesive suitable for PU).