

### MPR-Channel connectors

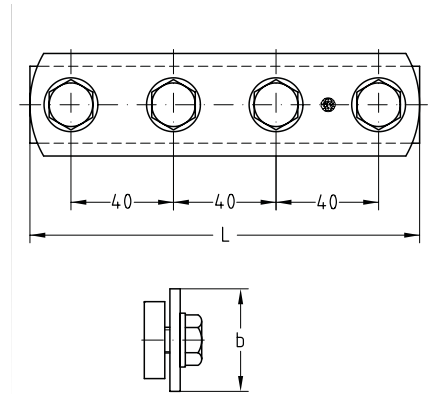
galvanised

#### Application

- Quick butt-joint connection for MPR-Support channels

#### Your advantages

- Enables exact alignment of the channels
- Four bolts provide a frictional joint
- Smooth attachment by sliding into the channel section



For profiles	Dimensions [mm]		Part no.	Sales unit	Pack unit
	b	L			
41/21-41/62	40	152	163109	25	Pieces

 Please refer to page 1/55 for the heavy-duty version of the channel connectors.