

MPR-Mounting angle 45°

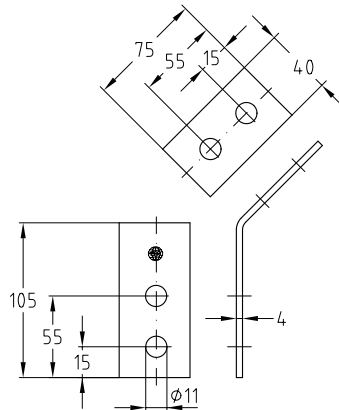
stainless steel

Application

- Solid fixing element for construction of pre-wall installations and shelves as well as for channel constructions for attachments of pipelines and air ducts without welding
- Also applicable for direct mounting on walls, ceilings or floors

Your advantages

- Variable mounting options
- Versatile, e.g. as: support bracket, connecting élément
- Multi-purpose component for professional, practical installation solutions



Features



Design	For profiles	Material	Part no.	Sales unit	Pack unit
45°	41/21-41/124	V4A	159471	10	Pieces

MPR-Cross channel connectors

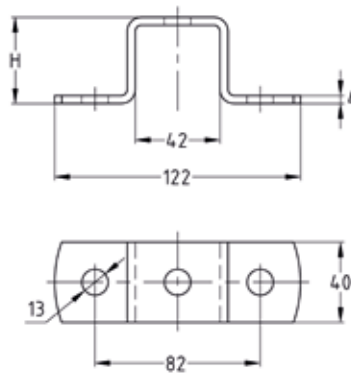
stainless steel

Application

- For cross-connections e.g. in shelves made from MPR-Support channels
- For indoor and outdoor use

Your advantages

- Easy-to-install connection element for setting up structures with correctly designed static loads using MPR-Support channels
- Greater flexibility when setting up structures made from channels
- For rotation-resistant attachment to building structure



Features



For profiles	Material	Dimensions H [mm]	Part no.	Sales unit	Pack unit
41/41	V4A	43	155634	10	Pieces
41/62		64	155637		