

MPR-Clamp brackets

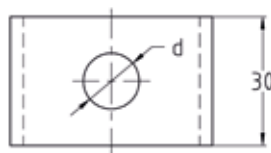
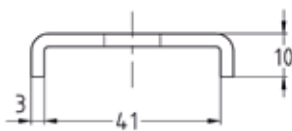
hot-dip galvanised

Application

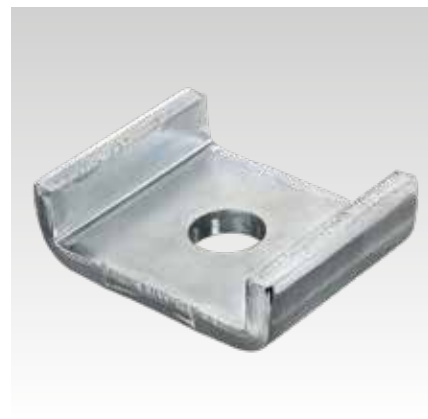
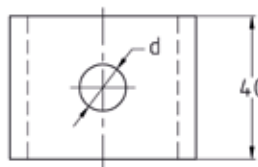
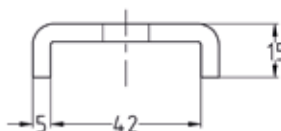
- For safe force transmission when installing MPR-Support channels together with threaded rods, anchor plugs and screws

Your advantages

- Two versions available
- Heavy-duty type available for transferring large forces
- Safe, folded edge prevents expansion of the rail slot



Standard version



Heavy-duty version

Features



Design	For profiles	For thread	Part no.	Sales unit	Pack unit
Standard version	41/21-41/124	M10	154238	50	Pieces
		M12	154237		
Heavy-duty version		M8	154234	10	
		M10	154235		
		M12	154803		
		M16	154236		

