

### MPR-Cross channel connectors

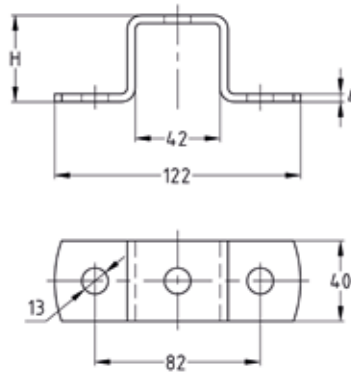
hot-dip galvanised

#### Application

- For cross-connections e.g. in shelves made from MPR-Support channels
- Connection of MPR-Support channels to constructions of MPT-Support profiles
- For indoor and outdoor use

#### Your advantages

- Easy-to-install connection element for setting up structures with correctly designed static loads using MPR-Support channels
- Greater flexibility when setting up structures made from channels
- For rotation-resistant attachment to building structure



#### Features



For profiles	Dimensions H [mm]	Part no.	Sales unit	Pack unit
41/21	23	154225	10	Pieces
41/41, 41/42	43	154226		
41/62	64	154229		
41/82	84	154227		
41/124	126	154228		

