

### MPR-Quick fasteners adapter

for pipe clamps acc. to DIN 3015, galvanised

#### Application

- MPR-Adapter for secure and easy installation of pipe clamps acc. to DIN 3015 light and heavy series on MPR-Substructures

#### Your advantages

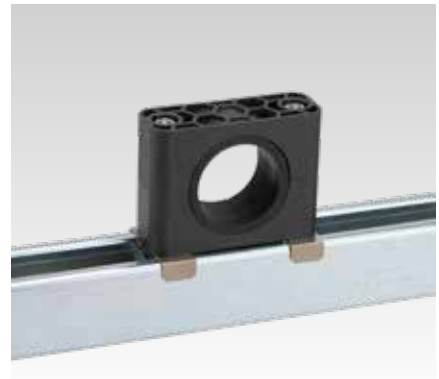
- Mounting of pipe clamps acc. to DIN 3015 light and heavy series on MPR-Support channels
- The MPR-Adapter can replace the weld plate
- Reduction of additional support channels depending on the application
- Simple and secure handling: stable support for clamp bodies, quick fastening with only one hand
- Secure and easy installation: insert the adapter in the channel slot, rotate by 90°, position the pipe clamp and fasten screws



MPR-Quick fastener adapter for heavy series size



MPR-Quick fastener adapter for light series



#### Features



Size	Design	For profiles	Suitable for	Part no.	Sales unit	Pack unit
0-8	M6	41/21-41/124	light series	<b>163007</b>	100	Pieces
1-3	M10		heavy series	<b>163019</b>		
4	M12				<b>163003</b>	