

MPR-Quick fasteners adapter

for pipe clamps acc. to DIN 3015, stainless steel

Application

- MPR-Adapter for secure and easy installation of pipe clamps acc. to DIN 3015 light and heavy series on MPR-Substructures

Your advantages

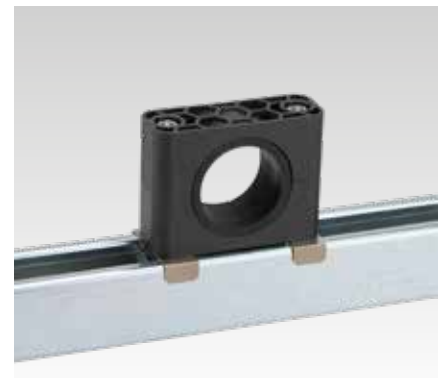
- Reduction of additional support channels depending on the application
- Simple and secure handling: stable support for clamp bodies, quick fastening with only one hand
- Secure and easy installation: insert the adapter in the channel slot, rotate by 90°, position the pipe clamp and fasten screws



MPR-Quick fastener adapter for heavy series size



MPR-Quick fastener adapter for light series



Design	For profiles	Size	Suitable for	Material	Part no.	Sales unit	Pack unit
M6	41/21-41/124	0-8	light series	V2A	163012	50	Pieces
M10		1-3	heavy series	V4A	163016		
M12		4			163014		

