

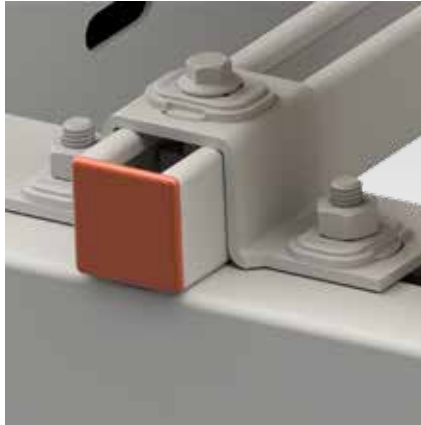
MPR-Adapter discs type S+ galvanised

Application

- Attachment of MPR-system components type S+ when making a through-fitting or direct attachment to the structure e.g. with anchor plugs

Your advantages

- Safe due to form lock in openings of MPR-system components type S+
- Galvanised version for use in dry interiors



Features



| | | | |
|-------------------|--------------------|------------------|---------------------|
| For thread M10 | Part no. 165512 | Sales unit 50 | Pack unit Pieces |
|-------------------|--------------------|------------------|---------------------|

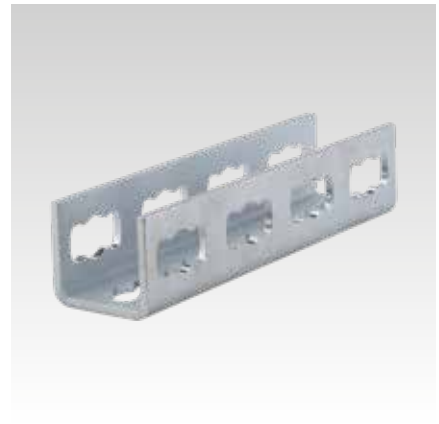
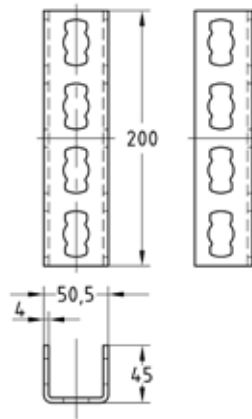
MPR-Channel connector type S+ heavy-duty version, galvanised

Application

- Fast butt-joining of MPR-Support channels and MPR-Connection lock type S+
- For indoor use

Your advantages

- Enables exact alignment of the channels
- Frictional connection via 4 connection locks type S+
- Easy handling thanks to installation with connection lock type S+



Features



| | | | |
|------------------------------|--------------------|-----------------|---------------------|
| For profiles 41/41-41/124 | Part no. 165844 | Sales unit 1 | Pack unit Pieces |
|------------------------------|--------------------|-----------------|---------------------|