

### MPR-Mounting angles 90° type S+

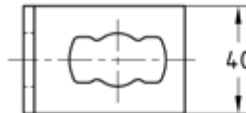
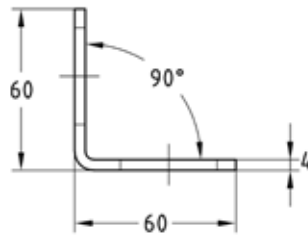
hot-dip galvanised

#### Application

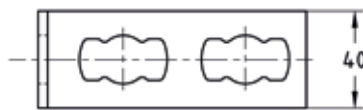
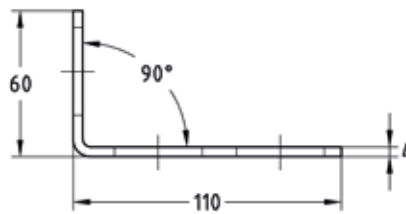
- Solid fixing element for construction of pre-wall installations and shelves as well as for channel constructions for attachments of pipelines and air ducts without welding
- For indoor and outdoor use

#### Your advantages

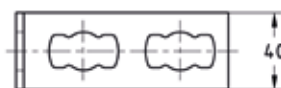
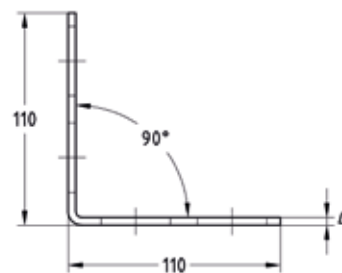
- Fast and simple installation of 90° corner joints with the MPR-Connection lock type S+
- Flexible use due to up to 4 connection locks depending on the design
- Increased load transfer when using 2 connection locks per leg



MPR-Mounting angle 90° 1+1 type S+



MPR-Mounting angle 90° 1+2 type S+



MPR-Mounting angle 90° 2+2 type S+

#### Features



Design	Permissible load F <sub>1</sub> [N]	Permissible load F <sub>2</sub> [N]
1+1	2,000	2,500
1+2		
2+2	4,000	



Design	For profiles	Part no.	Sales unit	Pack unit
1+1	41/21-41/124	165888	10	Pieces
1+2		165889		
2+2		165890		