

MPR-Slide nuts type S+ BV

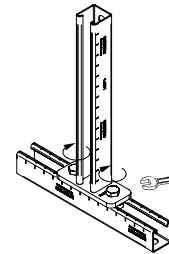
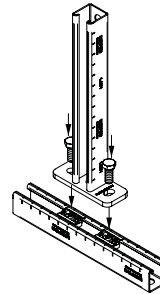
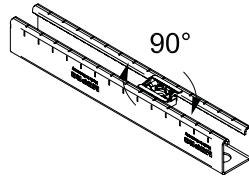
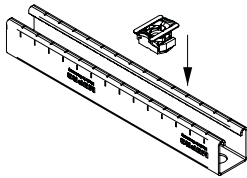
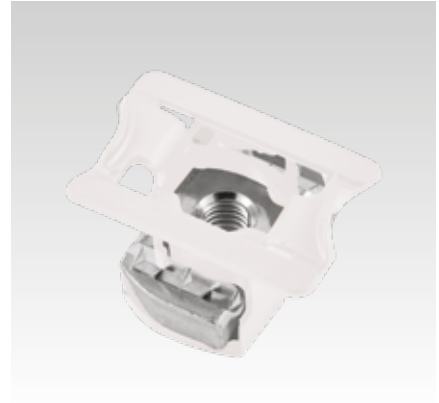
galvanised

Application

- For fast and safe fastening of flush mounting parts such as installation brackets in the rail slot of MPR-Support channels
- For indoor use

Your advantages

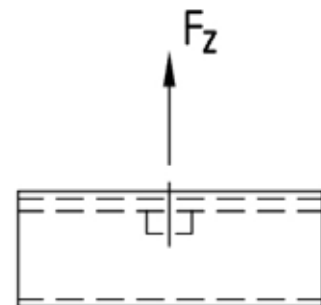
- Simply screw into the rail slot - done
- Safely retained after screwing in, alignable until screw is tightened
- No shifting even on vertical rail slots
- Flush-mounted, tensionally locked connection of accessories to the MPR-Support channels



Features



Material thickness of support channel [mm]	Max. recommended tensile load F_z [N]			Tightening torque [Nm]		
	M8	M10	M12	M8	M10	M12
1.5	3,500	3,500	3,500	20	30	40
2.0	4,500	4,500	4,500			
2.5		5,000	5,000			



For profiles	Connecting thread	Part no.	Sales unit	Pack unit
41/21-41/124	M8	166319	50	Pieces
	M10	166320		
	M12	166321		