

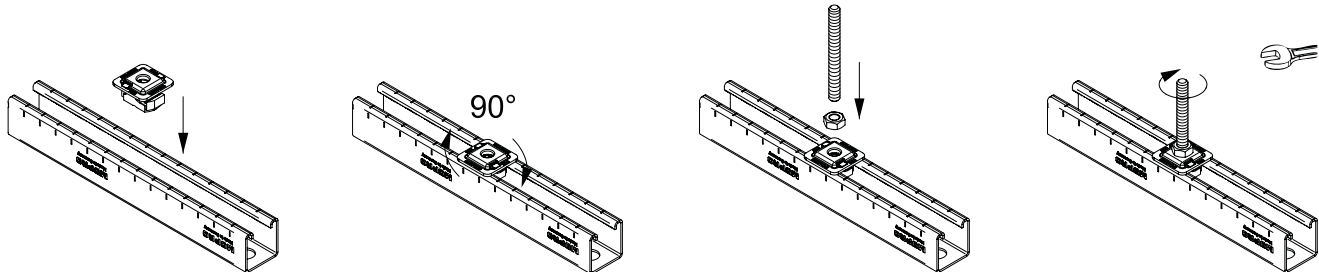
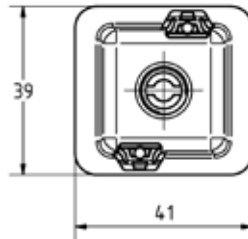
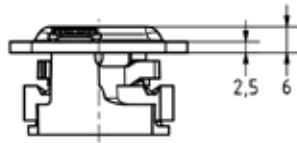
MPR-Quick fasteners type S+ BV galvanised

Application

- For safe and fast connecting of pipe clamps and mounting parts in the rail slot of MPR-Support channels
- For indoor use

Your advantages

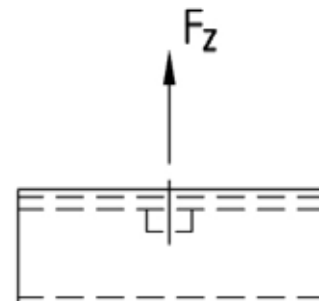
- Simply screw into the rail slot - done
- Safely retained after screwing in, alignable until screw is tightened
- Secure interlocking design for a positive connection with the MPR-Support channels
- No shifting even on vertical rail slots
- Optimized regarding smoke density and toxicity



Features



Material thickness of support channel [mm]	Max. recommended tensile load F_z [N]					Tightening torque [Nm]				
	M8	M10	M12	M16	R½"	M8	M10	M12	M16	R½"
1.5	3,100	3,100	3,100	-	-	9	17	29	-	-
2.0	4,500	4,500	4,500	4,500	4,500				29	29
2.5		5,000	5,000	5,000	5,000					



For profiles	Connecting thread	Part no.	Sales unit	Pack unit
41/21/1.5, 41/21/2.0, 41/41/2.0, 41/41/2.5, 41/62/2.5, 41/42/2.0, 41/82/2.0, 41/82/2.5, 41/124/2.5	M8	166299	50	Pieces
	M10	166300		
	M12	166301		
	M16	166302		
41/21/2.0, 41/41/2.0, 41/41/2.5, 41/62/2.5, 41/42/2.0, 41/82/2.0, 41/82/2.5, 41/124/2.5	½"	166303		