

Mounting angle 90°

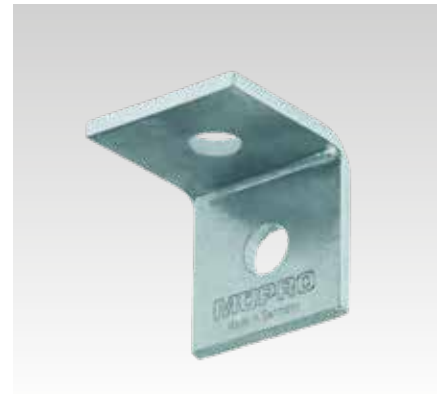
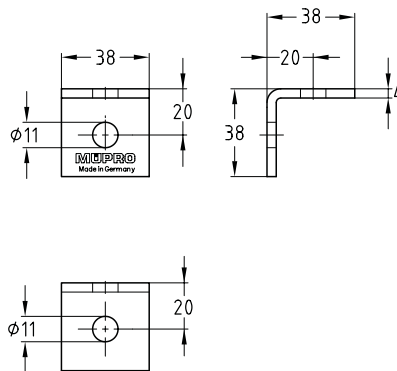
short, stainless steel

Application

- Strong and good value connecting element for the construction of frames, shelves and supports for pre-wall installations

Your advantages

- Creation of solid constructions without welding
- High flexibility and easy mounting
- Good adjustment to the widths of MPC- and MPR-Support channels



Features



Design	For profiles	Material	Part no.	Sales unit	Pack unit
90°	38/40, 40/60, 41/21-41/124	V2A	118854	25	Pieces

