

MPT-Hammer head bolts

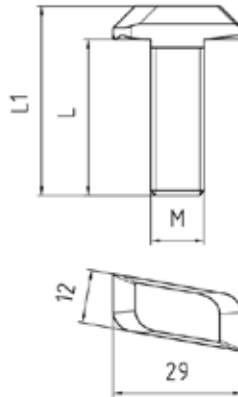
zinc lamella coating, silver

Application

- Hammer head bolts with washer and hexagonal nut for safe fastening of add-on parts in the channel slot of the MPT-Support profiles and consoles

Your advantages

- No danger of confusing parts, can be implemented universally for MPT-Profiles Q50, Q80, Q100 and Q150
- Strength class 8.8 for safe transmission of high forces
- Rifflid support on the hammer head for safe transmission of the holding force in the fastening groove




Features

For profiles	Size	Max. recommended tensile load Fz [N]	Max. recommended load lateral Fo [N] ¹⁾	Tightening torque [Nm] ²⁾
Q50-2.5	M10 x 25 mm	5,000	6,000	40
	M12 x 35 mm	7,000	9,500	65
	M12 x 60 mm			
	M12 x 80 mm			
	M12 x 100 mm			
Q80-2.0	M10 x 25 mm	10,000	6,000	40
	M12 x 35 mm	12,000	9,500	65
	M12 x 60 mm			
Q100-2.5	M10 x 25 mm	6,000	6,000	40
	M12 x 35 mm	8,000	9,500	65
	M12 x 60 mm			
Q100-3.5	M10 x 25 mm	10,000	6,000	40
	M12 x 35 mm	12,000	9,500	65
	M12 x 60 mm			
Q150-2.5	M10 x 25 mm	6,000	6,000	40
	M12 x 35 mm	8,000	9,500	65
	M12 x 60 mm			

Thread	Size	Length L [mm]	Length L1 [mm]	Weight [kg]	Part no.	Sales unit	Pack unit
M10	M10 x 25 mm	25	32.5	0.058	139167	50	Pieces
M12	M12 x 35 mm	35	42.5	0.08	139168		
	M12 x 60 mm	60	67.5	0.095	139169		
	M12 x 80 mm	80	88.5	0.111	151341	1	
	M12 x 100 mm	100	108.5	0.123	151342		

¹⁾ Hole tolerance of the bold has been adjusted.

²⁾ Values apply for threads being dry and free of dust, oil and grease. The MPT-Hammer head bolts are covered with a new type of zinc lamella coating, which has a lower friction coefficient than conventional galvanic coatings. This increases the ease of installation as the required preload force is reached at a much lower tightening torque.

 Size M12 x 80 and M12 x 100 available on request.