

### Round connectors

for joining or connecting threaded items, stainless steel

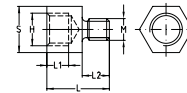
Thread	Length [mm]	Material V2A		Material V4A		Sales unit	Pack unit
		Part no.	Outer diameter [mm]	Part no.	Outer diameter [mm]		
M8	30	113262	11	113266	11	100	Pieces
	40	113277					
M10	30	113169	13	113172	13		
	40	113178					
M12	30	113199	15	113202	15		
	40	113208					
M16		113227	22	113230	25	25	



### Reducers

stainless steel

External thread M	Internal thread H	Spanner width [mm]	Material	Dimensions [mm]			Part no.	Sales unit	Pack unit
				L	L1	L2			
M8	M10	13	V2A	23	7	8	113500	1	Pieces
M10	M8			21			113465		
	M12	17		25	8	10	113453		
M12	M10	13		23			113471		



### Hexagonal nuts

DIN 934, stainless steel

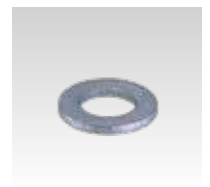
Thread	Height [mm]	Spanner width [mm]	Material V2A	Material V4A	Sales unit	Pack unit
			Part no.	Part no.		
M6	5	10	105477	105479	100	Pieces
M8	6.5	13	105486	105488		
M10	8	17	105423	105425		
M12	10	19	105439	105441		
M16	13	24	105453	105455		
M20	16	30	105465	105467		
M24	19	36	105470	105472	25	



### Washers

DIN 125, stainless steel

For thread	Outer diameter [mm]	Thickness [mm]	Material V2A	Material V4A	Sales unit	Pack unit
			Part no.	Part no.		
M6	12	1.6	127301	127304	100	Pieces
M8	16		127313	127272		
M10	20	2	127269	127283		
M12	24	2.5	127280	127292		
M16	30	3	127289	127275		



### Washers

for MPR-Support channels, stainless steel

For thread	Outer diameter [mm]	Thickness [mm]	Material	Part no.	Sales unit	Pack unit
M8	40	3	V4A	154454	100	Pieces
M10				154455		
M12				154456		

