

Round connectors

for joining or connecting threaded items, stainless steel

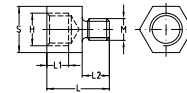
Thread	Length [mm]	Material V2A		Material V4A		Sales unit	Pack unit
		Part no.	Outer diameter [mm]	Part no.	Outer diameter [mm]		
M8	30	113262	11	113266	11	100	Pieces
	40	113277		113280			
M10	30	113169	13	113172	13	50	
	40	113178		113181			
M12	30	113199	15	113202	15		
	40	113208		-			
M16		113227	22	113230	25	25	



Reducers

stainless steel

External thread M	Internal thread H	Spanner width [mm]	Material	Dimensions [mm]			Part no.	Sales unit	Pack unit
				L	L1	L2			
M8	M10	13	V2A	23	7	8	113500	1	Pieces
M10	M8			21			113465		
	M12	17		25	8	10	113453		
M12	M10	13		23			113471		



Hexagonal nuts

DIN 934, stainless steel

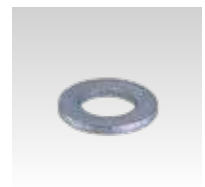
Thread	Height [mm]	Spanner width [mm]	Material V2A Part no.	Material V4A Part no.	Sales unit	Pack unit
M6	5	10	105477	105479	100	Pieces
M8	6.5	13	105486	105488		
M10	8	17	105423	105425		
M12	10	19	105439	105441		
M16	13	24	105453	105455		
M20	16	30	105465	105467	50	
M24	19	36	105470	105472	25	



Washers

DIN 125, stainless steel

For thread	Outer diameter [mm]	Thickness [mm]	Material V2A Part no.	Material V4A Part no.	Sales unit	Pack unit
M6	12	1.6	127301	127304	100	Pieces
M8	16		127313	127272		
M10	20	2	127269	127283		
M12	24	2.5	127280	127292		
M16	30	3	127289	127275		



Washers

for MPR-Support channels, stainless steel

For thread	Outer diameter [mm]	Thickness [mm]	Material	Part no.	Sales unit	Pack unit
M8	40	3	V4A	154454	100	Pieces
M10				154455		
M12				154456		

