

### Washers

DIN 125, galvanised

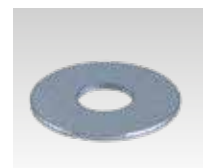
For thread	Outer diameter [mm]	Inner diameter [mm]	Thickness [mm]	Part no.	Sales unit	Pack unit
M6	12	6.4	1.6	127307	100	Pieces
M8	16	8.4		127310		
M10	20	10.5	2	127277		
M12	24	13	2.5	127286		
M16	30	17	3	127295		
M20	37	21		127298		



### Washers

for MPC-Support channels, galvanised

For thread	Outer diameter [mm]	Inner diameter [mm]	Thickness [mm]	Part no.	Sales unit	Pack unit
M6	18	6.4	1.6	127175	100	Pieces
	24		2	127244		
	36		6.5	127184		
M8	24	8.5		127253		
	30	8.4		165993		
	36	8.5		127214		
M10	24	10.5		127079		
	29			127088		
	30		3	140876		
	36		2	127121		
M12		12.5		127151		
M16	40	17	3	127169		



### Washers

for MPR-Support channels, galvanised

For thread	Outer diameter [mm]	Inner diameter [mm]	Thickness [mm]	Part no.	Sales unit	Pack unit
M8	40	8.4	3	151101	100	Pieces
M10		10.5		151102		
M12		13		151103		
M16		17		127169		

