

Turnbuckles

DIN 1480, hot-dip galvanised

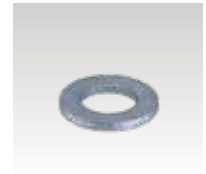
Thread	Length [mm]	Adjustment range [mm]	Part no.	Sales unit	Pack unit
M12	125	80	125010	25	Pieces
M16	170	110	125016		



Washers

DIN 125, hot-dip galvanised

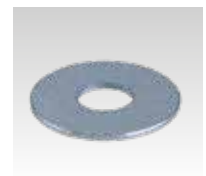
For thread	Outer diameter [mm]	Inner diameter [mm]	Thickness [mm]	Part no.	Sales unit	Pack unit
M8	16	8.4	1.6	127346	100	Pieces
M10	20	10.5	2	127318		
M12	24	13	2.5	127325		
M16	30	17	3	127328		



Washers

for MPR-Support channels, mechanically galvanised

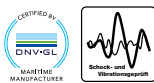
For thread	Outer diameter [mm]	Inner diameter [mm]	Thickness [mm]	Part no.	Sales unit	Pack unit
M8	40	8.4	3	154239	100	Pieces
M10		10.5		154240		
M12		13		154241		
M16		17		154242		



Link chain

DIN 763, hot-dip galvanised

Size	Length [m]	Part no.	Sales unit	Pack unit
4 x 32 mm	30	112096	1	Roll



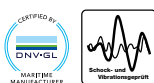
Base plates

hot-dip galvanised

Thread	Dimensions [mm]			Part no.	Sales unit	Pack unit
	L	b	s			
3/4"	140	40	5	112280	1	Pieces
M12				112535		
1"				112181		



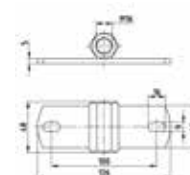
! These products are manufactured to order.
Minimum quantities and delivery time on request.



Base plate HS1 with connecting nut

hot-dip galvanised

Thread	Dimensions [mm]			Part no.	Sales unit	Pack unit
	L	b	s			
M16	126	40	5	112477	1	Pieces



! These products are manufactured to order.
Minimum quantities and delivery time on request.