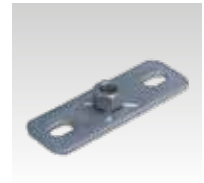
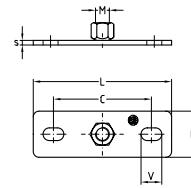


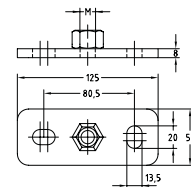
### Base plates with hexagonal nut galvanised

Size	Thread	Oblong hole V	Hole-centre distance C [mm]	Dimensions [mm]			Part no.	Sales unit	Pack unit
				L	b	s			
1	M8	9 x 16 mm	54	80	30	3	112407	50	Pieces
	M10						112395		
	M12						112401		
2	M8	11 x 19 mm	80	120	40	4	112467		
	M10						112451		
	M12						112459		
	M16						112463		



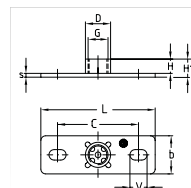
### Base plates with hexagonal nut welded around, galvanised

Thread	Oblong hole V	Hole-centre distance C [mm]	Dimensions [mm]			Part no.	Sales unit	Pack unit
			L	b	s			
M16	13 x 20 mm	80.5	125	50	8	165187	10	Pieces
M20						164912		



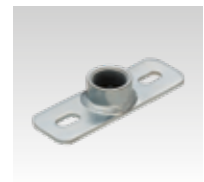
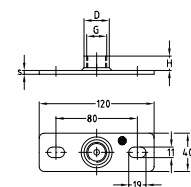
### Base plates with connection socket galvanised

Size	Thread	Oblong hole V	Hole-centre distance C [mm]	Dimensions [mm]						Part no.	Sales unit	Pack unit
				D	H	H1	L	b	s			
1	1/2"	9 x 16 mm	54	26.4	15	18	80	30	3	112389	50	Pieces
2	3/4"	11 x 19 mm	80	26.4	15	18	120	40	4	112435		
		31.8								17		



### Base plates with connection socket welded around, galvanised

Size	Thread	Oblong hole V	Hole-centre distance C [mm]	Dimensions [mm]						Part no.	Sales unit	Pack unit
				D	H	L	b	s				
2	1/2"	11 x 19 mm	80	26.4	15	120	40	4	112807	50	Pieces	
	3/4"			31.8	17				112809			
	1"			39.5	19				112805			



### Base plates with connection socket welded around, with four mounting holes, galvanised

Size	Thread	Hole-centre distance C [mm]	Dimensions [mm]			Part no.	Sales unit	Pack unit
			L	b	s			
3	1/2"	70	100	60	4	112825	50	Pieces
	3/4"					112829		
	1"					112817		

