

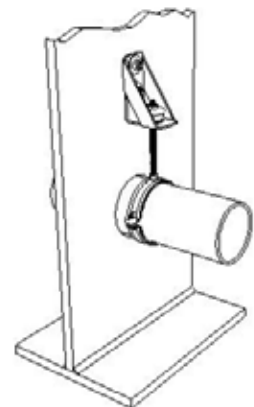
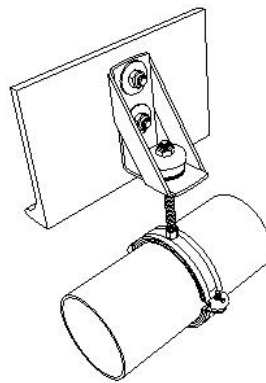
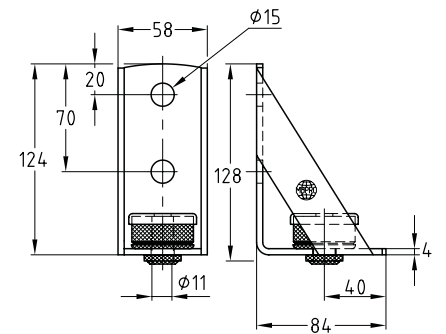
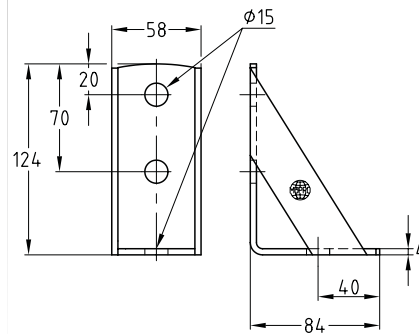
### Supporting angle galvanised

#### Application

- For lateral suspension of pipelines on reinforced steel beams
- As substructure for the attachment of channels

#### Your advantages

- Angle element for higher requirements for stability of mounting structures
- With high-quality vibration control of DÄMMGULAST® Resilient pad
- Usable as bracket for supporting heavy loads close to a wall
- For supporting cross-beams in confined spaces



#### Features



Design	Max. recommended load [N]	Average vibration reduction [dB(A)]
with DÄMMGULAST® Resilient pad	1,000	17
without DÄMMGULAST® Resilient pad	5,000	-

Design	Part no.	Sales unit	Pack unit
with DÄMMGULAST® Resilient pad	127789	25	Pieces
without DÄMMGULAST® Resilient pad	127792		