

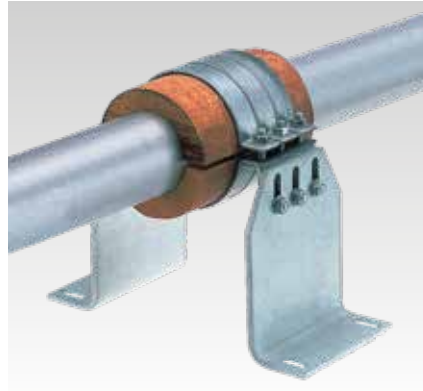
Wooden blocks

Application

- Thermal decoupled pipe attachment in the field of refrigeration
- Insulation of anchoring point for chilled water pipes
- For friction attachments taking up axial pipe forces
- For indoor use

Your advantages

- Direct between pipe clamp and cold pipe: decreased heat flux between pipe and environment
- Simple attachment to the pipe insulation
- Suitable for all pipe materials
- Attachment possible at any point on a smooth pipe

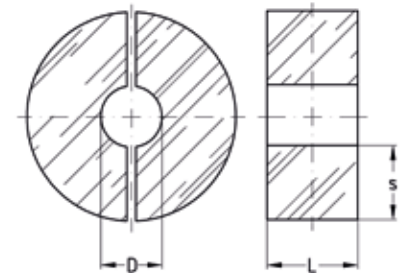


Anchor point solution on chilled water pipe with STATO® Clamps and STATO® Brackets



Features

Max. recommended load axial (mounted with 3 STATO® Clamps and STATO® Brackets) [N]	8,000
Temperature range	0 °C to +90 °C



Pipe outer Ø D [mm]	Shell length L [mm]	Insulation thickness 20 mm		Insulation thickness 30 mm		Sales unit	Pack unit
		Wooden blocks	STATO® Clamps	Wooden blocks	STATO® Clamps		
21.3	200	115874	168050	115883	168053	1	Pieces
26.9		115951	168051	115960	168054		
33.7		116174	168052	116183	164518		
42.4		116286	168053	116295	168055		
48.3		116325	168054	116334	168056		
60.3		116445	168055	116454	129431		
64		116484	168056	116493	168058		
76.1		116526	168057	116538	129291		
88.9		116565	168290	116574	153945		
102		115495	147107	115504	168292		
108		115531	153945	115540	168064		
110		115566	168061	115575	153946		
114.3		115602	168291	115611			
125		115638	168063	115647	138322		
133		115673	153946	115682	129306		
139.7		115709	138235	115718	153947		
159		115748	153947	115757	168067		
168.3		115787	129309	115796	152207		
219.1		115910	129326	115919	129331		
267		115987	129333	115996	129343		
273	116023	129334	116032	129398			



Pack size: 1 unit = 2 half-blocks.

On site, wooden blocks need to be insulated against vapor diffusion, at least in same quality as sectional pipe insulation. When choosing the shell thickness, the dew point needs to be considered.

Mount STATO® Clamps with a tightening torque of 50 Nm.

Other shell lengths, diameters and insulation thickness can be produced according to customers specifications upon request.