

PHONOLYT® Anchor points

double kit, galvanised

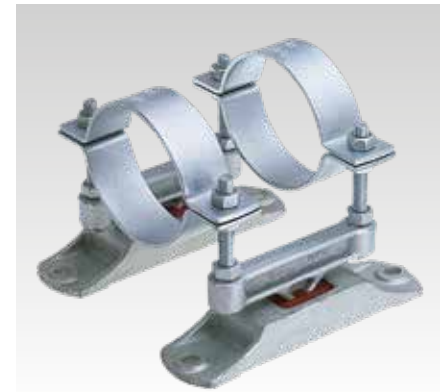
Application

- The ideal component for vibration controlled anchor points for pipes to meet the vibration control requirements of DIN 4109 and VDI 4100
- Suitable for ceiling, bulkhead or floormounting
- Floor mounting of pipe and duct lines
- Ideal as vibration-isolated pipeline anchor point for downpipe support or riser pipes

Your advantages

- Isolates the pipe acoustically from the building structure

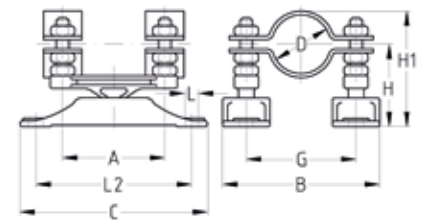
- Practical downpipe support with perfect vibration decoupling
- Double kit for high loadings
- Special feature: Also approved for alternating load directions on plastic piping
- Lowest possible distance from the building structure attainable
- Continuously adjustable wall distance due to threaded pins
- Practical design made for easy installation
- Fixed point for all pipe types, regardless of pipe flanges and bushings
- Sound level reduction by up to 40 dB(A)
- Silicone-free



Features



Type	dB(A) 27	dB(A) 40
Scope of supply	2 PHONOLYT® Vibration decoupler dB(A) 27, M10, 2 STATO® Clamps, 30 x 3 mm, without lining, galvanised, 4 Threaded pins M10, 12 Hexagonal head nuts M10	2 PHONOLYT® Vibration decoupler dB(A) 40, M12, 2 STATO® Clamps, 30 x 3 mm, without lining, galvanised, 4 Threaded pins M12, 12 Hexagonal head nuts M12



Type	Size [mm]	Nominal size DN [mm]	Clamping range [mm]	Threaded pins	Dimensions [mm]							Part no.	Sales unit	Pack unit	
					A	B	C	G	H	H1	L				L2
dB(A) 27	32	25	32 - 35	M10 x 55 mm	80	98	147	61	62 - 71	82 - 105	11	122	120352	1	Pieces
	42.4	32	40 - 42.4			75		86 - 95	120356						
	48.3	40	48.3 - 50			80		89 - 98	120360						
	56	50	56 - 60.3			92		96	120371						
dB(A) 40	60.3		60.3 - 61	M12 x 80 mm	126	163	227	103	95 - 102	130 - 138	13	194	120408		
	76.1	70	76.1 - 80	M12 x 100 mm				120	95 - 122	139 - 167			120413		
	82.5	80	80 - 83					127		140 - 168			168462		
	88.9	90	88 - 90					133		146 - 174			120375		
	110	100	110 - 112	M12 x 110 mm				157	95 - 132	157 - 190			120391		
	125	125	125 - 127					171		164 - 202			120365		
	133		133 - 135					183		169 - 207			120395		
	139.7		137 - 140					186					168464		
	159	150	159 - 166	M12 x 130 mm				209	95 - 152	182 - 240			120399		
	200	200	199 - 202	M12 x 150 mm				224	95 - 172	199 - 276			168465		
	212		210 - 212					259		207 - 285			120403		

Please refer to the „Technical information“ chapter for permissible loads.