

Guide angles

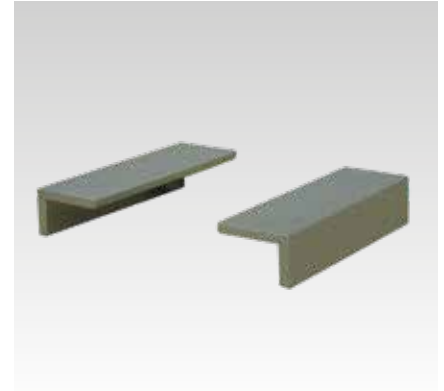
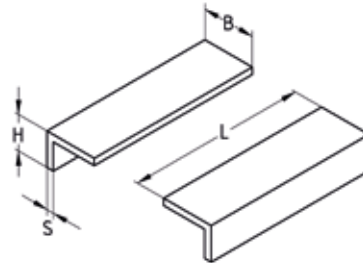
untreated

Application

- Guide angle for (on site) welding onto the supporting structure for guidance and to prevent lift-off pipe slides
- Individual applications in combination with all pipe slides

Your advantages


- Two versions available



Features

Material	Code for material	Surface	Code for surface
S235JR (St37)	W37	untreated	OR

Type	Design	Code	Dimensions [mm]				Content [pieces/set]	Weight [kg]	Part no.	Sales unit	Pack unit
			B	H	L	S					
L-30	untreated	W37-OR	30	20	100	4	2	0.159	108999	1	Pieces
L-40			40					0.212	109000	2	

 Guide angles are always supplied as pairs in untreated condition. Corrosion protection is made on-site.